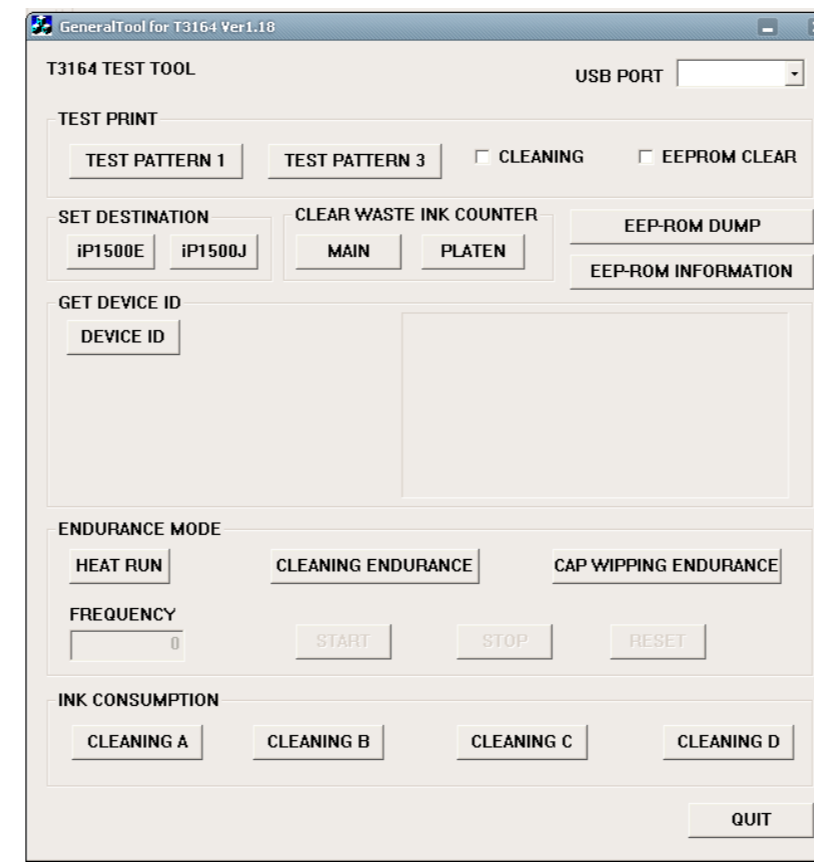


Canon Pixma Ip4700 Service Mode Tool Version 1.050



DOWNLOAD: <https://timutli.com/2ir1qy>



Setting up Printing on a Local Network For large network printers, it is possible to deploy the printer as a service and allow the computers on the network to access the printer. For example, a document server in a large organization might have hundreds of client computers that all connect to it for printing purposes. A document server acts as a print server that allows multiple computers on the network to share the same printer. To set up a document server, follow these steps: 1. Install and configure the Windows Server 2008 print and document server role. 2. Configure a static IP address on the network printer. 3. Connect the printer to the network. 4. Run the Windows Server Print Management Console. 5. From the Printers section of the console, right-click the printer that will be used for the print server, and then click Properties. 6. On the General tab, change the Mode setting to Service and click OK. 7. In the Printers section of the console, click Add Printer. 8. On 82157476af

Related links:

- [Select Maker 097 Beta 8](#)
- [magix music maker 2008 producer edition crack](#)
- [Roblox \(Adopt Me\) Hack UNLIMITED MONEY](#)